



# Competition Winners May 2021

## Trees



<b>Novice</b>	<b>Monochrome</b>	
Ira Wolpert	What a Tree	1
<b>Advanced</b>	<b>Monochrome</b>	
Kay Norvell	Mountain Trees in Snow	1
Doug Wolters	Longwood Tree	2
Coco Simon	Trees Against the Sky for Moondog	3
Gosia Klosek	Tree and Rock	H
Dale Lewis	Dead Palm Tree	H
Kay Norvell	Yellowstone Trees	H
<b>Novice</b>	<b>Digital</b>	
Bill James	Ancient Beech with Temporary Resident	1
Claudia Kidder	Tree Color	2
<b>Advanced</b>	<b>Digital</b>	
Doug Wolters	Dead Horse Point Tree	1
Peter Dunner	Red Maple	2
Peter Dunner	Patterned Trees	3
Dale Lewis	Symmetric Palm Tree	H
Gary McDavid	Redwood Forest	H
Coco Simon	Cherry Blossom Festival	H

## Novice Monochrome



**First Place: “What a Tree”**  
**By Ira Wolpert**

This was taken at a plantation outside of Charleston, SC on a bright day resulting in many colors with the sky coming thru this tree in varying shades of blue, all of which resulted in a confusing picture. I converted it to black and white for a more effective and dramatic effect.

Taken with a Canon T3i, f/8.0, 1/200, ISO 100.

## Advanced Monochrome



**First Place: “Mountain Trees in Snow”**  
**By Kay Norvell**





## **Second Place: “Longwood Tree”**

**By Doug Wolters**

In the tropical room of the conservatory at Longwood Gardens, there is a fascinating tree with spiky bark. I noticed a sprout that looked like a miniature tree growing from the bark. While I loved the image, it never really worked in color -- not enough contrast between the sprout and the bark. But, applying what I learned in a recent webinar, black and white turned it into a successful image. Shot on a tripod with a Canon 5D Mark III, the Canon 180mm Macro lens, 1/5 sec. at f / 20, ISO 200.



## **Third Place: “Trees Against the Sky for Moondog”**

**By Coriolana Simon**

Decades ago in Manhattan, an odd man in Viking clothing frequently stood on a midtown corner with his songs and his music. This was Moondog. An interesting composer and poet of sorts, he recorded his songs on LPs. One of my favorites was “Trees against the sky, fields of plenty...” When I photographed these trees in Rock Creek Park, the simplicity of the composition reminded me of Moondog’s song. The image was made with my Canon 5D Mark II and a 24-70mm f/2.8 Canon zoom. The exposure was 1/5 sec. at f/18, and the ISO was 100. I did the conversion to monochrome with Silver Efex Pro and chose a warm sepia tone reminiscent of the warm November afternoon when I made the image.



## **HM: “Tree and Rock”**

**By Gosia Klosek**

This image captures the dynamic shape S shape of the tree trunk and chaotic multitude of branches against the solid rock towering above. To bring the viewer attention to these contrasting shapes, I turned the image to monochrome.

Nikon ISO 200 98mm 8/8.0 1/500 sec



## **HM: “Dead Palm”**

**By Dale Lewis**

The photo of a dead palm tree was taken on May 24, 2016 at 10:13 a.m. in Antigua and Barbuda when I went home for a funeral of my best friend's brother. I was walking from my High School to my village when I saw this lonely dying tree. The photo was taken with a Canon EOS Kiss X6i camera. Setting: ISO 100, 1/500 sec, F/5.6 and 50 mm. It was converted to monochrome in Lightroom.





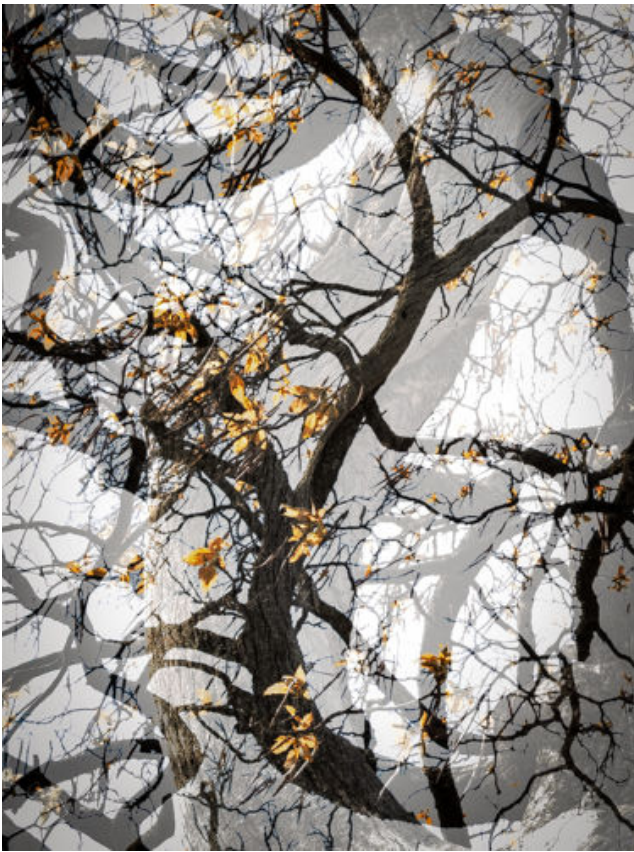
**HM: “Yellowstone Tree”  
By Kay Norvell**

## Novice Color



**First Place: “Ancient Beech with Temporary Resident”  
By Bill James**

An almost-grown gray squirrel raised in a cavity in a 180 year old beech tree seems both impatient and reluctant to leave that home at historic Longwood Mall in Brookline, MA. Best single capture of the 95 I took in 30 minutes.  
Nikon Z7, zoom lens set at 200 mm, ISO 800, 1/60th sec. at F/13



**Second Place: “Tree Color”**  
**By Claudia Kidder**

## Advanced Color



**First Place: “Dead Horse Point Tree”**  
**By Doug Wolters**

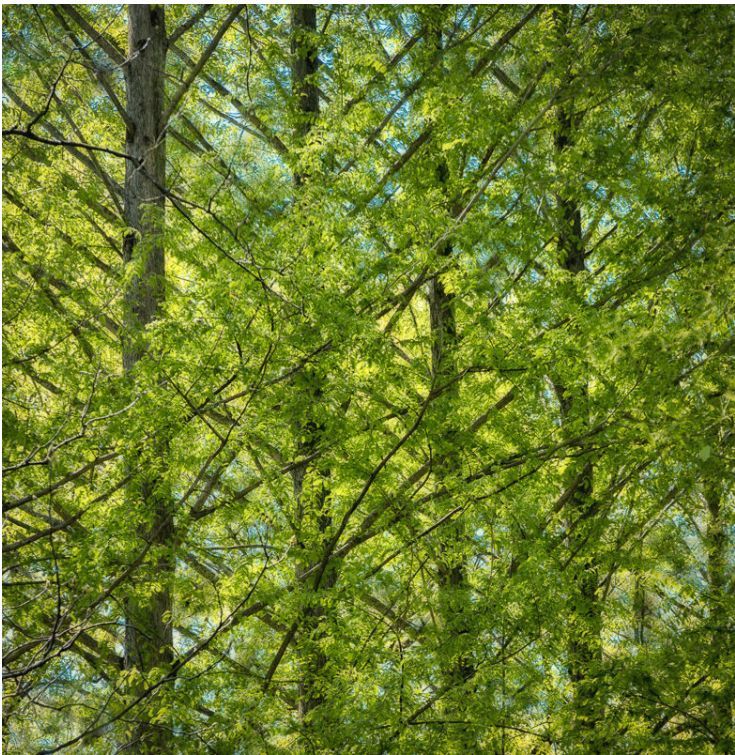
The 1400+ mile bus tour I took the summer 2019 out west had some amazingly packed days. Day 5 began with a hike to Landscape Arch in Arches National Park. Then, for lunch, we stopped at Dead Horse Point State Park, where I saw this tree close to the visitor's center. After lunch, we went to Canyonlands National Park, where we visited three overlooks. And yet, I seldom felt rushed shooting pictures. Shot with an Olympus E-M1 Mark II, the Olympus 12-100mm F4.0 lens, 1/800 sec at f/ 8.0, ISO 200.





**Second Place: “Red  
Maple”  
By Peter Dunner**

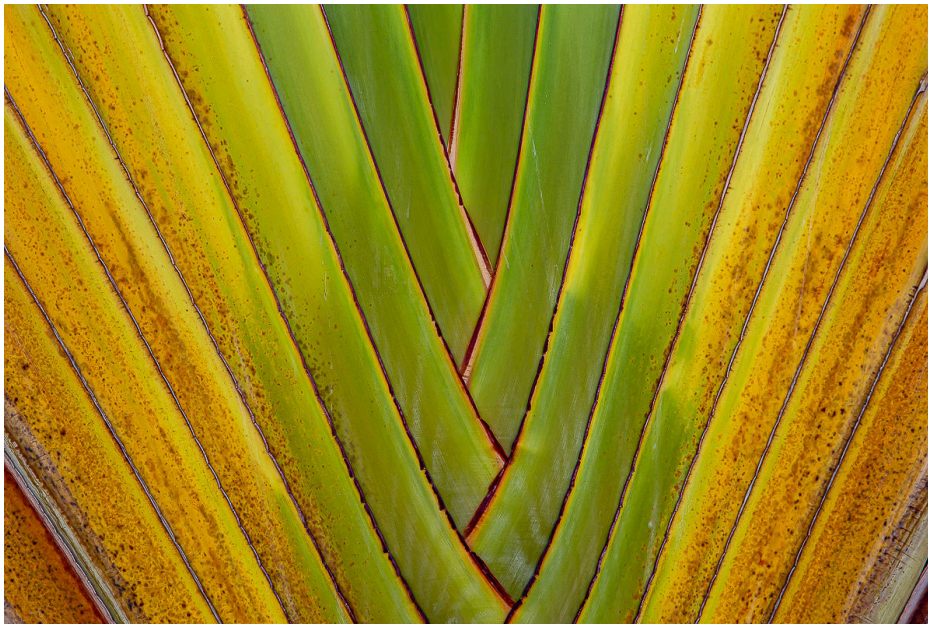
Just before COVID we were in Spain and visiting Retiro Park. It is full of wonderful and interesting specimens. I liked the tree and the two birds sitting on the branch adding a contrast to the red leaves of late fall



**Third Place : “Patterned Trees”  
By Peter Dunner**

I was in McCrillis gardens in Bethesda shooting the azaleas and beautiful flowers and looked up. I loved the pattern of the trees with the verticals and diagonals





**HM: “Symmetric Palm Tree”**  
**By Dale Lewis**

The photo of a palm tree was taken on July 5, 2018 at 9:56 a.m. in Jamaica at the RIU resort. We went there to celebrate 100 yrs of my wife’s grandmother who was living in Jamaica. She passed away in 2019. The photo was taken with a Canon EOS 6D camera and lens 70-200 mm F/2.8L IS II USM. Setting: ISO 400, 1/200 sec, F/8, 70 mm.



**HM: “Redwood Forest”**  
**By Gary McDavid**

In 2019, we took a trip to the coast of Oregon. We found this redwood forest south of Bandon, and were immediately caught up by the difficulty of shooting trees of this size. I took many vertical shots, but in this one, I tried to show the size of the tree by focusing on a section of the trunk and making it very large in the frame. I very much liked the light on the main tree and the light in the background as well as the ferns in the foreground. I took this with a Sony A7R4 and shot it with a 24-105mm lens, at 52mm. The settings were: f/16, ISO 100, speed 0.5 second





**HM: “Cherry Blossom Festival”**  
**By Coco Simon**

Very old, gnarled Japanese cherry trees line curving streets in the residential Kenwood neighborhood in Bethesda. Doug and I visited the trees in late March, but we were too early to find them in full bloom. The weather was still cool, and the day was overcast. The soft light caught this lone cherry blossom surrounded by tiny green shoots on this twisted trunk.

Image made with an Olympus OM-D EM-1 Mark II and the wonderful Olympus / Zuiko 12-100mm zoom. Exposure: 1/25 sec. at f/10, with a 500 ISO.